

# VENDOR ASSESSMENT REPORT

September 21st, 2023

MULTICURE PHARMA PRIVATE LIMITED

VA-477164268958070

## **INDEX**

- 1 Authentication of Vendor Profile**
- 2 Financial Capacity**
- 3 Production Capacity of the Vendor**
- 4 Video Assessment**
- 5 Photographic Evidences**

## **Explanation about the Vendor Assessment Methodology**

The Vendor Assessment was based on the three broad parameters i.e., Physical Location (Company Profile), Financial Capacity and Production Capacity.

The data regarding company profile and financial capacity of the vendor were auto-fetched from the GeM Portal, through their registration process. QCI validated the quality certificate, test reports and business experience of the vendor through the documents submitted by the official on behalf of the firm. An undertaking has been taken by the vendor to verify the debarred/blacklisted status of the firm. ITR verification was done by GeM through the PAN details provided by the vendor. The production capacity was verified based on the documents received by the firm.

The documents are considered to be authentic and complete, based on vendor's claims and cannot be verified for any misrepresentation, concealment or forgery. The documents such as process flow chart, type of machines, safety measures, transportation etc. provided by the firm were validated through a video-based assessment and geo-tagged pictures.

It is clarified that the assessment was based on mutual trust between parties. QCI stands guarantee to the data collected and verified exclusively at the time of assessment. However, if at a later date, it is found that any vendor has purposefully submitted documents which were either incorrect, modified, misrepresented in order to gain unlawful benefits, the GeM will be free to take any action as deemed under law.

In case, the video assessment was inconclusive, an on-site assessment will be conducted to factually check the authenticity of the capability, as claimed. The vendor may be asked to pay for the expenses of this verification assessment.

## 1. Authentication of Vendor Profile

Parameters	Requirements	Responses
<b>Company Description/Details</b>	Name of the Company/Firm	MULTICURE PHARMA PRIVATE LIMITED
	Registered Address	22, Police Street, Bangalore, KARNATAKA, 560053
	Address of Manufacturing Site	14A, IDA, Bhongir, Yadadri, Telangana, 508116
	Primary Contact Number	9019888000
	Primary Email ID	mcppl.hyd@gmail.com
	Additional Contact Number	8088810431
	Additional Email ID	mcppl.ecom@gmail.com
	Constitution	company
	Company Identification Number	U17297KA1995PTC103571
	Date of Incorporation of the Company	31/03/1995
	GST Number (Company)	29AABCR6115M1Z3
	PAN of the Company	AABCR6115M
	Company debarred/blacklisted by any Govt. organisation	No
<b>Banking Details</b>	Bank Name	ICICI BANK LIMITED, SADASHIV NAGAR-BANGALORE, KARNATAKA
	Account Holder Name	MULTICURE PHARMA PRIVATE LIMITED
	Account Number	777705661166
	IFSC code	ICIC0001661
<b>Details of Products Registered for VA</b>	Quality Certification	Yes
	Other License Number (if applicable)	Yes

**Details of top three Government & Private Orders (Value wise) received in last three financial years:**

**A) Government Organisation**

S.No.	Ordering Govt. Department/Agency	Item Name	Quantity Supplied	Order Value (Rs.)	Work Order/Completion Letter Number
1	RIMS, Raichur	Tab Pentetrazol,INJ Amikacin,Tab Ondansetron,Tab clopidogrel 75mg	28000 Nos	45900	RIMS/SUP (RGSSH)/TEND/INJ-TAB/93 (1)/2022-23

**B) Private Organisation**

S.No.	Ordering Entity	Item Name	Quantity Supplied	Order Value (Rs.)	Work Order/Completion Letter Number
-	-	-	-	-	-

**2. Financial Capacity of the Vendor**

**Financial Capacity: Annual Turnover of the Firm with Profit/Loss Statement of Last Three Years.**

S.No.	Acknowledgement No.	Assessment Year	Turnover (in Rs.)	Profit/Loss Amount (in Rs.)	ITR Type
1	907140061270819	2019	0	0	ITR-6
2	847977071191220	2020	0	0	ITR-6
3	460315580271221	2021	26401736	1381699	ITR-6

### 3. Production Capacity of the Vendor

Parameters	Requirements	Responses
<b>Basic Information</b>	Number of production sites	1
<b>Process Capability</b>	Generic 'Process Flow Chart' availability	Yes
	Availability of 'Specific Process Flow Diagram' of the products manufactured by the firm	No
<b>Production Capacity</b>	List of all the machines/software involved in the manufacturing process	Hot Air Over, Hot Plate, Dessicator, etc.
	Firm's monthly manufacturing capacity	69.1 Metric Ton
	Utilisation of the capacity against the manufacturing capacity	41.67 Metric Ton
	Customisation according to customer specifications	Yes
<b>Quality</b>	Availability of 'Quality Assurance Plan' document	No
	Availability of 'Part-Wise Inspection Plan'	No
<b>Territory of Operations</b>	Territory of Operations	Regional
	Availability of SOP for defect free delivery of products	No
<b>Safety</b>	Availability of 'Safety Standard and Operating Procedures' manual	No
<b>Suppliers</b>	List of the approved suppliers along with quantity supplied	Yes
	Availability of document for performance monitoring of suppliers	No
<b>Rejected Material</b>	Process of handling rejected material	Rejected material is disposed.
<b>Consumer Grievance</b>	Availability of consumer complaint process	No
	Time taken for resolution of complaints (in days)	-
<b>Warranty</b>	Availability of warranty/ guarantee or recalling to the product	Yes
	Obligation for raw material, product development design, product quality, product lifetime and product sustainability in the warranty provided by the firm	No
<b>Research and Development</b>	Availability of in-house company R&D centre	No
	Availability of R&D centre of the parent company	No
	Recognised or approved R&D centre	No
	Collaboration with premium R&D institutes for product development/new product/quality improvement	No
	Patents/Copy Rights/ published/quality improvement	No
	Prototypes Developed	No

### Items for which vendor assessment is requested

S.No	Category Name	Production Capacity (per month)	Test Reports available with the firm	Status
1	Contact Surface Cleaners-IS 14364	50000 Litre	No	Not an OEM
2	Gum Spirit Of Turpentine Oil-IS:533	2.6 Metric Ton	No	OEM
3	POVIDONE IODINE SOLUTION	50000 Litre	Yes	Not an OEM
4	POVIDONE IODINE SOLUTION	50000 Litre	Yes	Not an OEM
5	POVIDONE IODINE SOLUTION	50000 Litre	Yes	Not an OEM
6	Antiseptic Liquid	37.7 Metric Ton	No	OEM
7	Alcohol Based Hand Rub/Hand Sanitizer	11.7 Metric Ton	No	OEM
8	Antiseptic Liquid	37.7 Metric Ton	No	OEM
9	Household Disinfectants Or Disinfectant Fluids Phenolic Type-IS 1061	13.2 Metric Ton	No	OEM
10	Household Disinfectants Or Disinfectant Fluids Phenolic Type-IS 1061	13.2 Metric Ton	No	OEM
11	Antiseptic Liquid	37.7 Metric Ton	No	OEM
12	COVID Disinfectant Sprayer-Continuous Protection Disinfectant	50000 Litre	No	Not an OEM
13	Contact Surface Cleaners-IS 14364	50000 Litre	No	Not an OEM
14	Alcohol Based Hand Rub/Hand Sanitizer	11.7 Metric Ton	No	OEM
15	Alcohol Based Hand Rub/Hand Sanitizer	11.7 Metric Ton	No	OEM
16	Calamine Lotion	50000 Litre	No	Not an OEM
17	Glycerine as per IS: 1796	3.9 Metric Ton	No	OEM
18	Paraffin Oil	50000 Litre	No	Not an OEM
19	Hydrogen peroxide solution	50000 Litre	No	Not an OEM
20	Formaldehyde Solution as per IS: 3321	50000 Litre	No	Not an OEM
21	Sodium Hypochlorite or Sodium Hypochlorite Solution as per IS:11673	50000 Litre	No	Not an OEM
22	Antiseptic Liquid	37.7 Metric Ton	Yes	OEM

### Desktop Assessment Feedback

The vendor has a 'Quality Certificate'.  
The 'Past Work Experience' of the vendor includes Government Organizations.  
The 'Territory of Operation' of the vendor is 'Regional Area'.

#### 4. Video Assessment

Parameters	Information	Responses
<b>Physical Location</b>	Physical location verified with the address proof provided in the Desktop Assessment	Yes
<b>Basic Information</b>	Name of the official taking part in the assessment	Neelamadhab Maharana
	Designation of the official taking part in the assessment	Sr. Executive
<b>Process Capability</b>	Process flow for production followed by the firm	Completely Followed
<b>Production Capacity</b>	Machines available for production	All machines available
<b>Quality</b>	Quality Assurance Plan' being followed by the firm	Yes
<b>Suppliers</b>	Key aspects for selecting suppliers	Quality, Cost, Timely Delivery, etc.
<b>Territory of Operation</b>	Availability of transport facility	Yes
<b>Safety</b>	Presence of Safety Signs	No
	Availability of 'Safety Equipment'	Yes
<b>Research And Development</b>	Availability of R&D facility	No
	Products/Processes available for which patents have been obtained	No
	Availability of developed prototypes	No

#### Video Assessment Feedback

- 1) Based on the interview with Mr. Neelamadhab Maharana (Sr. Executive) along with the live video, pictorial evidence, and geo-tag verification, Multicure Pharma Private Limited is found to be an OEM.
- 2) As per the declaration provided by the vendor in the Desktop Assessment form, the vendor has requested to withdraw the product categories 'Contact Surface Cleaners-IS 14364' and 'POVIDONE IODINE SOLUTION' from the Vendor Assessment process.
- 3) As per the declaration provided by the vendor in the Desktop Assessment Form, the product categories 'Antiseptic Liquid', 'Household Disinfectants Or Disinfectant Fluids Phenolic TypeIS 1061' and 'Alcohol Based Hand Rub/Hand Sanitizer' were mistakenly applied multiple times for the Vendor Assessment.
- 4) For the applied product categories with serial no. '18 and 19' the availability of mandatory CAS registry number was not furnished during the Video Assessment. Hence, marked as 'Not an OEM'.
- 5) For the product categories with serial no. '12, 20 and 21' test reports to ensure alcohol content, pH range, density, etc. were not furnished during the Video Assessment. Hence, marked as 'Not an OEM'.
- 6) For the product category 'Calamine Lotion', necessary raw materials and manufacturing process was not evidenced during the Video Assessment. Hence, marked as 'Not an OEM'.
- 7) The raw materials such as RM sheets, pipes, insulation fabric, foam, heating element, thermocouples, switch, controller, thermostat, wires, power cord, indicators, casting body, compressor, etc. primarily used to manufacture the product categories marked as 'OEM' were witnessed during the Video Assessment process.

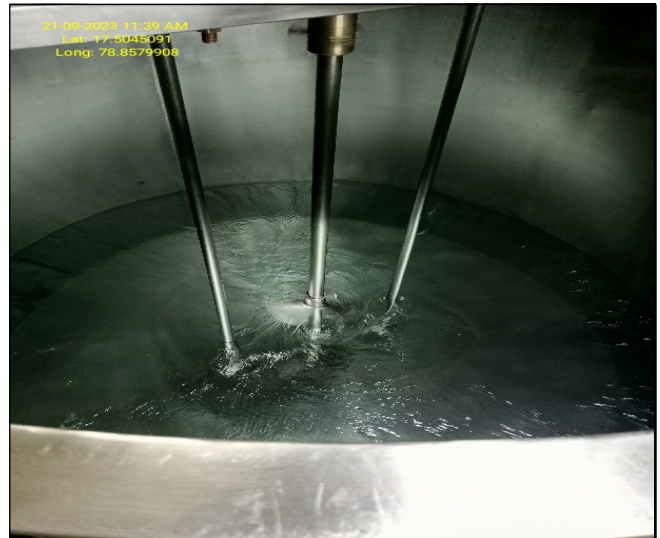




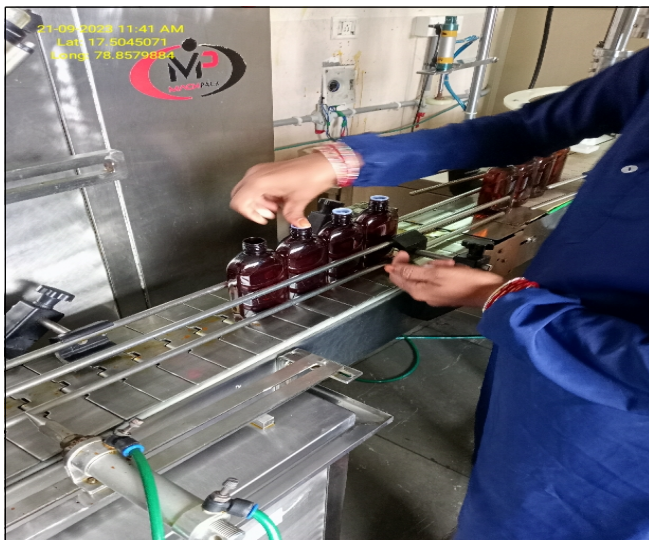
## Photographic Evidences



**Physical Location: Outside of the Firm**



**Manufacturing Process**



**Manufacturing Process**



**Critical Machine for Production**





**Critical Machine for Production**



**Quality Check Process**



**Safe Packaging for Defect Free Delivery of Products**



**Finished Product**

### Recommendations on the basis of Vendor Assessment

The firm is an OEM

### **IMPORTANT NOTICE**

Quality Council of India's Vendor Assessment Report is a confidential, third party assessment, on an entity desirous of claims of OEM status under GeM and is solely intended for the specific recipient to whom it is addressed. It cannot be disclosed to any other person, authority or organisation without specific consent of GeM or the entity, which is assessed.

The Vendor Assessment Report is based on the information/clarification provided to QCI by the management/officials of the concerned entity through self-disclosure, which is presumed to be honest, unambiguous and correct. QCI doesn't guarantee or take responsibility for the accuracy, completeness or adequacy of any information on which report is based unless verified by QCI in Vendor Assessment. QCI accepts no liability for the contents of this report or for the consequences of any actions taken on the basis of information provided in the report. Vendor Assessment is not an audit and this report is not in any way a recommendation for entering into any kind of transaction/commitment/agreement etc. with the concerned entity.

QCI accepts no responsibility, whatsoever, for any loss or damage from the use of any information given in the report and nothing contained in the report is capable or intended to create any legally binding obligations, financial or any other liability whatsoever on QCI, it's leadership or persons/organisations involved in Vendor Assessment.

**For any queries, please contact on the below mentioned contact details:**

**Email: [gem.admin@qcin.org](mailto:gem.admin@qcin.org)**

**Helpline: +91-9810811852**